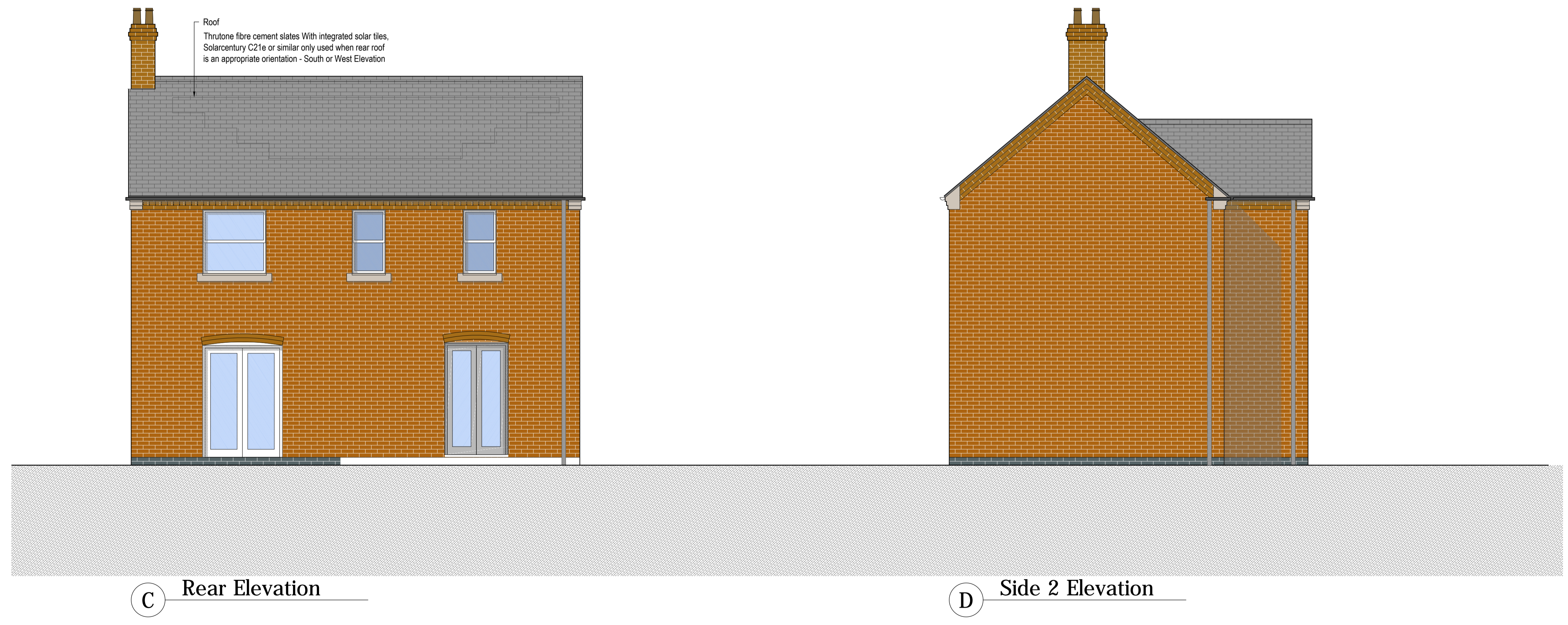


P/2014/01663
 Received 06/01/15



A Front Elevation

B Side 1 Elevation



C Rear Elevation

D Side 2 Elevation

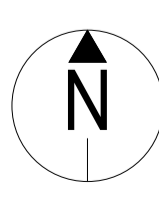
rev	details	by	date
P00	FIRST ISSUE	MC	01.12.2014
P01	COMMENTS FROM MEETING ON 01.12.14 INCORPORATED	MC	05.12.2014
P02	ISSUED FOR PLANNING	MC	19.12.2014
P03	RE ISSUED FOR PLANNING WITH COMMENTS INCORPORATED	MC	06.01.2015

rev	details	by	date

Notes

1. Do not scale from drawing, use figured dimensions only.
2. All dimensions to be checked onsite.
3. This drawing to be read in conjunction with all other Gillespies drawings and specifications.

Ordnance Information shown is reproduced from Ordnance Survey material with the permission of Ordnance Survey on behalf of the Controller of Her Majesty's Stationary Office. © Crown Copyright. Unauthorised reproduction infringes Crown Copyright and may lead to prosecution or civil proceedings. License No. 1000 17362



Engineers

Quantity surveyors

Other consultants

Project title
 UTTOXETER-PENNYCROFT

Drawing title
 HOUSE TYPE 7
 ELEVATIONS

Drawing number
 M5242-2216

Drawing Status
 PLANNING

Date 15.10.2014 Scale 1:50 @ A1

Revision
 P03

Drawn MC Checked MS



East Staffordshire
 Borough Council
 The Millsters
 Wetmore Road
 Burton upon Trent
 DE14 3LS

Milton Chambers, 12 Haddon Court, Leeds LS1 4LJ
 P: 0113 247 0550 F: 0113 247 0660 E: design.team@gillespies.co.uk